

TOSHIBA BIPOLAR LINEAR INTEGRATED CIRCUIT SILICON MONOLITHIC

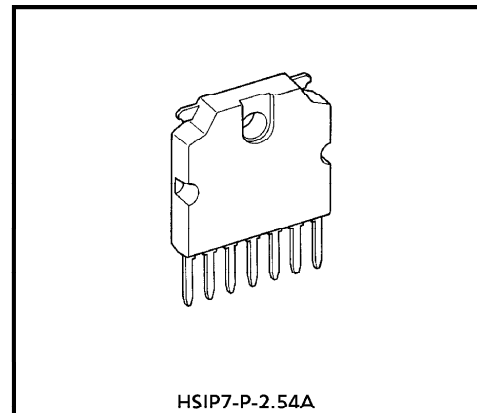
TA7252AP

5.9W AUDIO POWER AMPLIFIER

The TA7252AP is audio power amplifier for consumer applications. It is designed for high power, low distortion and low noise. Since the package is a 7pin SIP (Single Inline Package), it greatly simplifies construction of a power amplifier both in design and assembly. It is suitable for car radio power amplifier.

FEATURES

- Very Few External Parts
- High Power
 - : $P_{OUT(1)} = 5.9W$ (Typ.)
($V_{CC} = 13.2V$, $f = 1kHz$, $THD = 10\%$, $R_L = 4\Omega$)
 - $P_{OUT(2)} = 9.6W$ (Typ.)
($V_{CC} = 13.2V$, $f = 1kHz$, $THD = 10\%$, $R_L = 2\Omega$)
- Low Distortion
 - : $THD = 0.07\%$ (Typ.)
($V_{CC} = 13.2V$, $f = 1kHz$, $P_{OUT} = 0.5W$, $R_L = 4\Omega$)
- Low Noise
 - : $V_{NO(1)} = 0.7mV_{rms}$ (Typ.)
($V_{CC} = 13.2V$, $R_L = 4\Omega$, $G_V = 53dB$, $R_g = 10k\Omega$, $BW = 20Hz \sim 20kHz$)
 - $V_{NO(2)} = 0.4mV_{rms}$ (Typ.)
($V_{CC} = 13.2V$, $R_L = 4\Omega$, $G_V = 53dB$, $R_g = 0$, $DIN\ Noise : DIN45405$)
- Protector : Thermal Shut Down, Over Voltage Protection, Short Protection
- Operating Supply Voltage Range : $V_{CC(opr.)} = 9 \sim 18V$



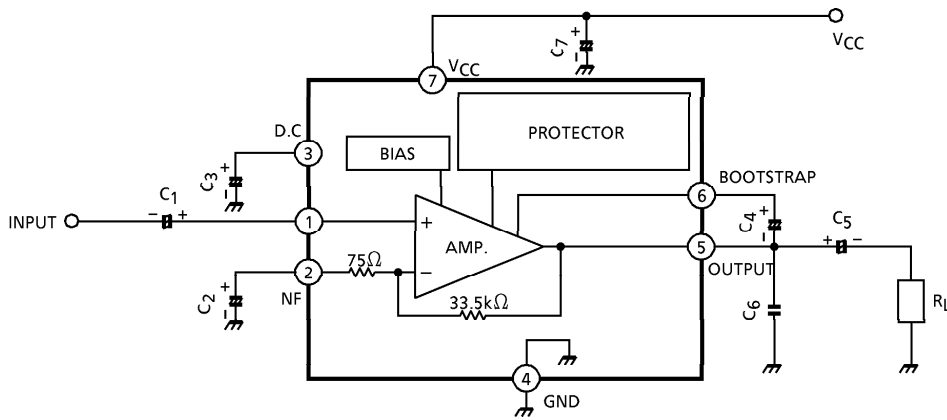
HSIP7-P-2.54A

Weight : 2.15g (Typ.)

961001EBA1

- TOSHIBA is continually working to improve the quality and the reliability of its products. Nevertheless, semiconductor devices in general can malfunction or fail due to their inherent electrical sensitivity and vulnerability to physical stress. It is the responsibility of the buyer, when utilizing TOSHIBA products, to observe standards of safety, and to avoid situations in which a malfunction or failure of a TOSHIBA product could cause loss of human life, bodily injury or damage to property. In developing your designs, please ensure that TOSHIBA products are used within specified operating ranges as set forth in the most recent products specifications. Also, please keep in mind the precautions and conditions set forth in the TOSHIBA Semiconductor Reliability Handbook.
- The products described in this document are subject to foreign exchange and foreign trade control laws.
- The information contained herein is presented only as a guide for the applications of our products. No responsibility is assumed by TOSHIBA CORPORATION for any infringements of intellectual property or other rights of the third parties which may result from its use. No license is granted by implication or otherwise under any intellectual property or other rights of TOSHIBA CORPORATION or others.
- The information contained herein is subject to change without notice.

BLOCK DIAGRAM



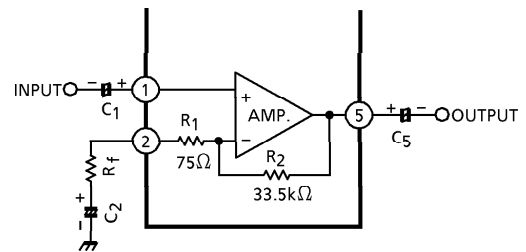
APPLICATION INFORMATION

1. Voltage gain adjustment

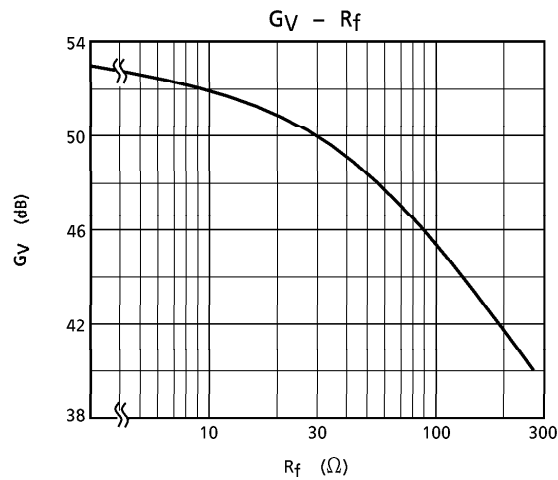
The closed loop voltage gain (G_V) is determined by R_1 , R_2 and R_f .

$$G_V = 20 \log \frac{R_1 + R_f + R_2}{R_1 + R_f}$$

When $R_f = 0$, $G_V = 53\text{dB}$ (Typ.) is given.



(Fig.1)



(Fig.2)

The recommended voltage gain is more than 40dB.

2. Measures against oscillation

The purpose of capacitor : C_6 is to prevent oscillation.

This capacitor needs to be small temperature coefficient.

So ceramic capacitor is unsuitable.

A voltage gain less than 40dB results occasionally in a plastic oscillation.

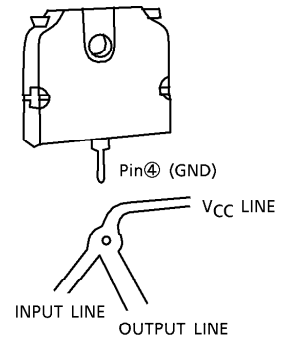
3. Precaution at print board design

(1) GND line

The GND pin is only one in this IC.

When there is some common impedance between the input side GND and the output side GND, electrical characteristics as THD degrade.

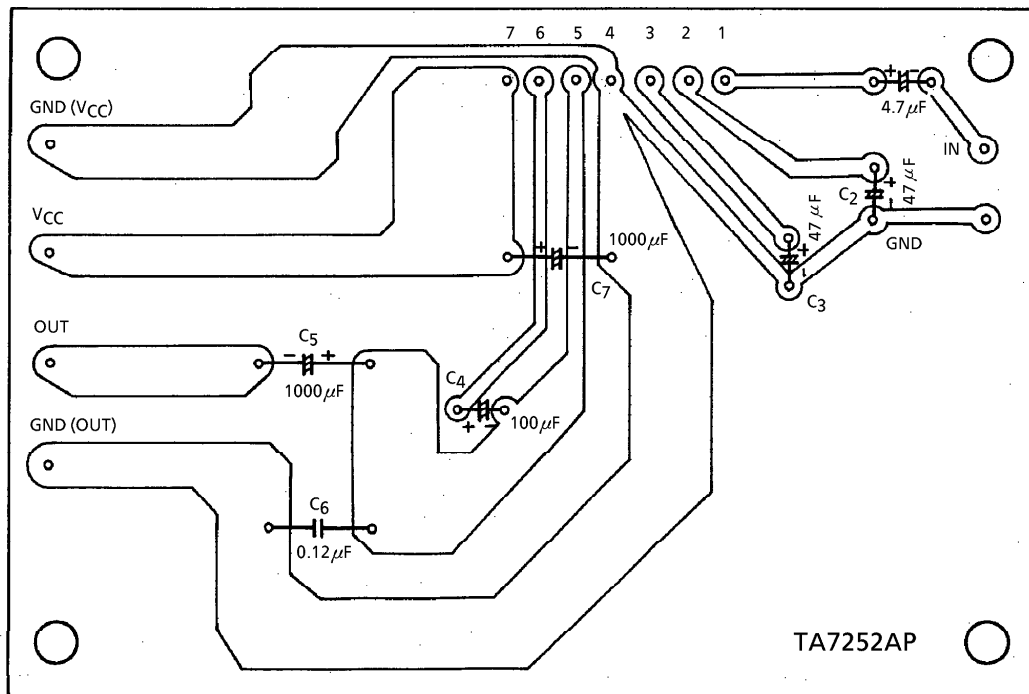
3 GND lines (input, output and V_{CC} sides) should be branched at the pin④ as shown (Fig.3).



(Fig.3)

(2) It is recommended to refer the standard print board.

STANDARD P.C.B.



MAXIMUM RATINGS (Ta = 25°C)

CHARACTERISTIC	SYMBOL	RATING	UNIT
Peak Supply Voltage (0.2s)	V _{CC (surge)}	48	V
DC Supply Voltage	V _{CC (DC)}	25	V
Operating Supply Voltage	V _{CC (opr)}	18	V
Output Current (Peak)	I _{O (peak)}	4.5	A
Power Dissipation	P _D	15	W
Operating Temperature	T _{opr}	- 30~75	°C
Storage Temperature	T _{stg}	- 55~150	°C

ELECTRICAL CHARACTERISTICS

(Unless otherwise specified, V_{CC} = 13.2V, R_L = 4Ω, R_G = 600Ω, f = 1kHz, Ta = 25°C)

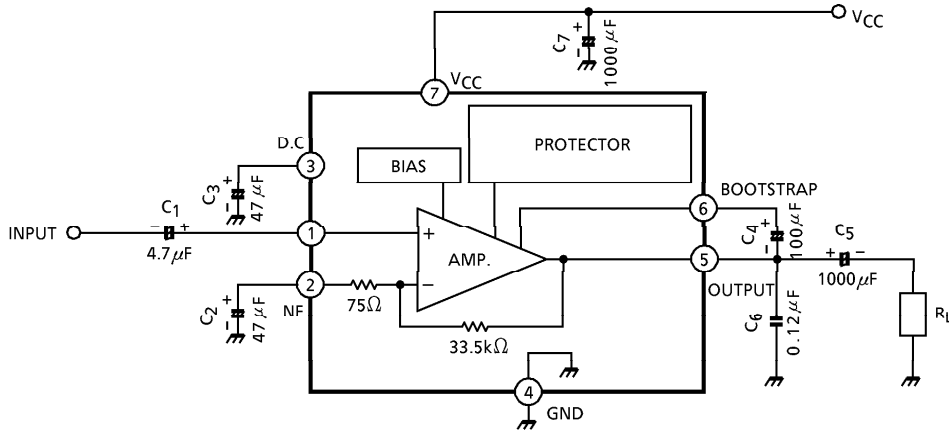
CHARACTERISTIC	SYMBOL	TEST CIR-CUIT	TEST CONDITION	MIN.	TYP.	MAX.	UNIT
Quiescent Current	I _{CCQ}	—	V _{IN} = 0	—	3.5	3.5	mA
Output Power	P _{OUT (1)}	—	THD = 10%	5.0	5.9	—	W
	P _{OUT (2)}	—	THD = 10%, R _L = 2Ω	—	9.6	—	
Total Harmonic Distortion	THD (1)	—	P _{OUT} = 0.5W	—	0.07	0.5	%
	THD (2)	—	P _{OUT} = 1W, R _L = 2Ω	—	0.10	—	
Output Noise Voltage	V _{NO (1)}	—	R _G = 10kΩ, G _V = 53dB BW = 20Hz~20kHz	—	0.7	1.8	mV _{rms}
	V _{NO (2)}	—	R _G = 0, G _V = 53dB DIN noise (DIN45405) filter	—	0.4	—	
Voltage Gain	G _V	—	V _{IN} = 0.5mV _{rms}	51	53	55	dB
Ripple Rejection Ratio	R.R.	—	R _G = 0, f _{ripple} = 100Hz V _{ripple} = 0.775V _{rms} (0dBm)	—	- 62	- 50	dB
Input Resistance	R _{IN}	—	f = 1kHz	—	30	—	kΩ

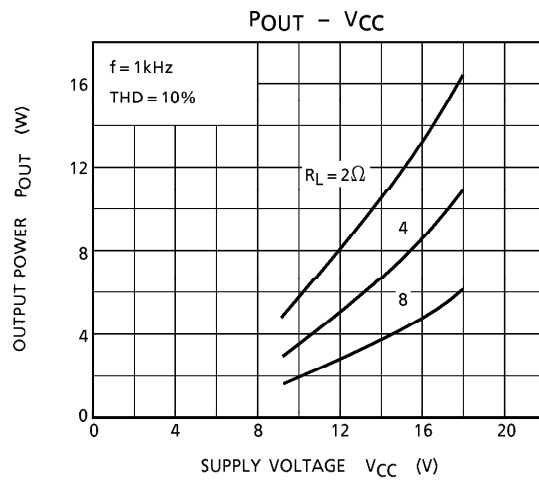
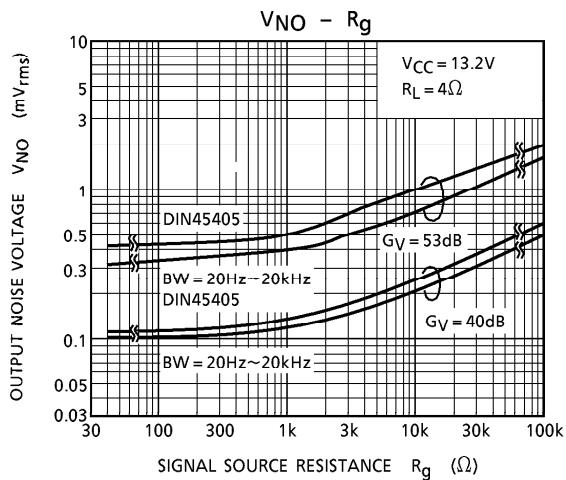
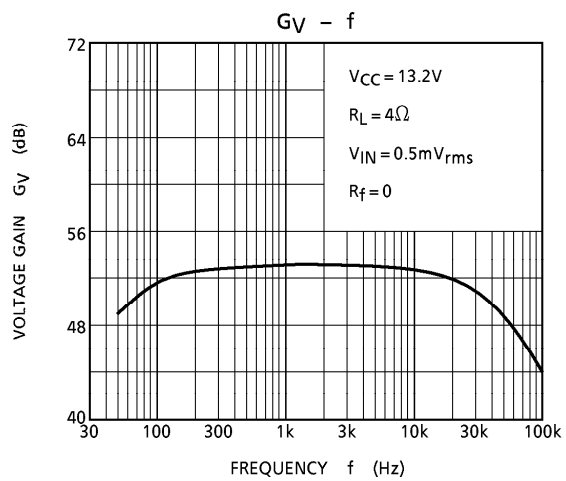
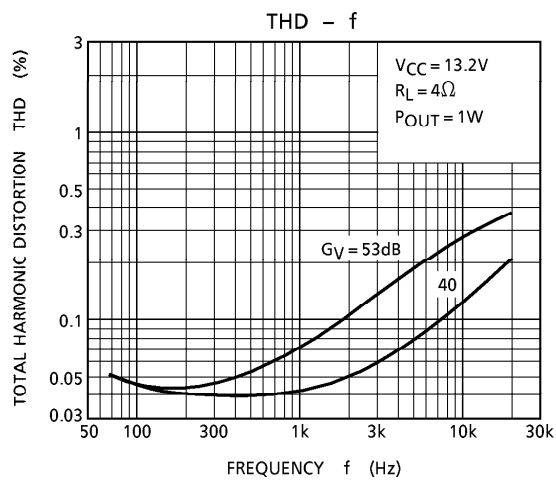
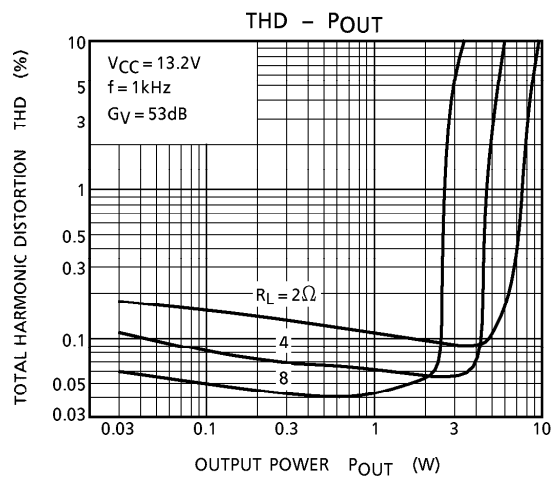
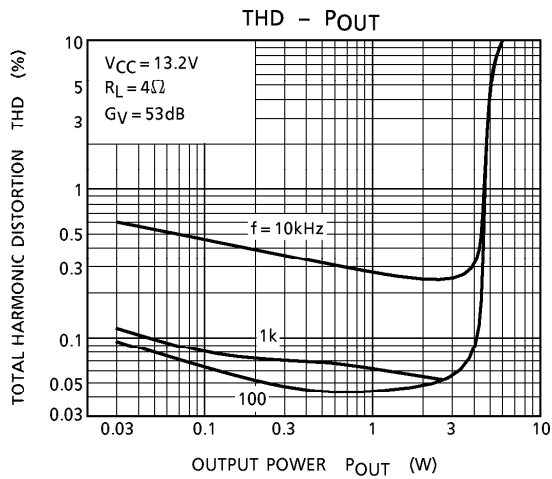
TYP. DC VOLTAGE OF EACH TERMINAL

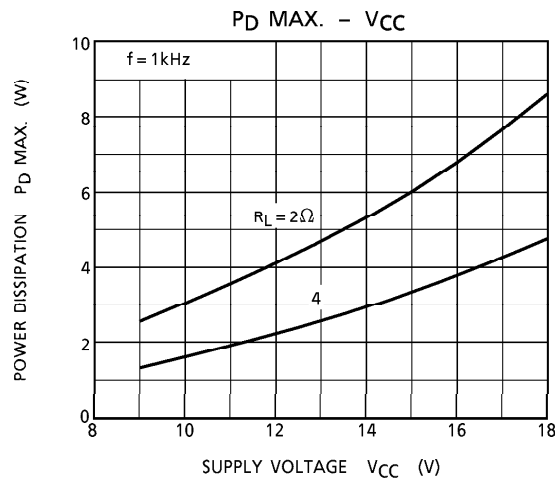
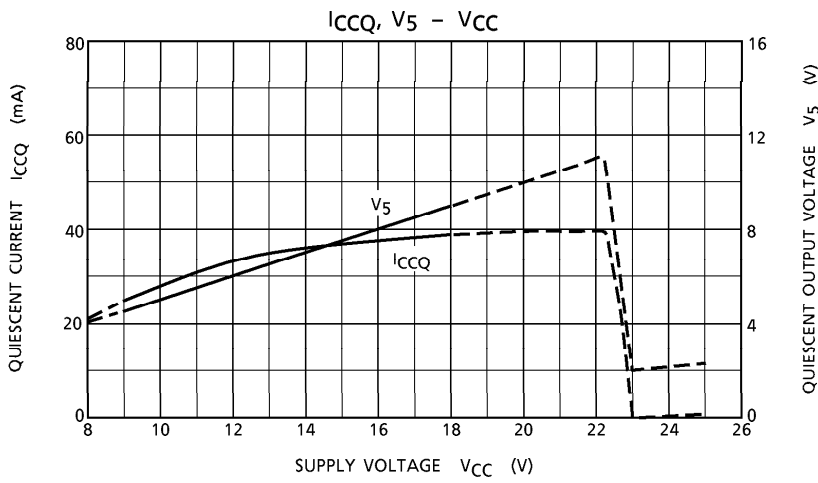
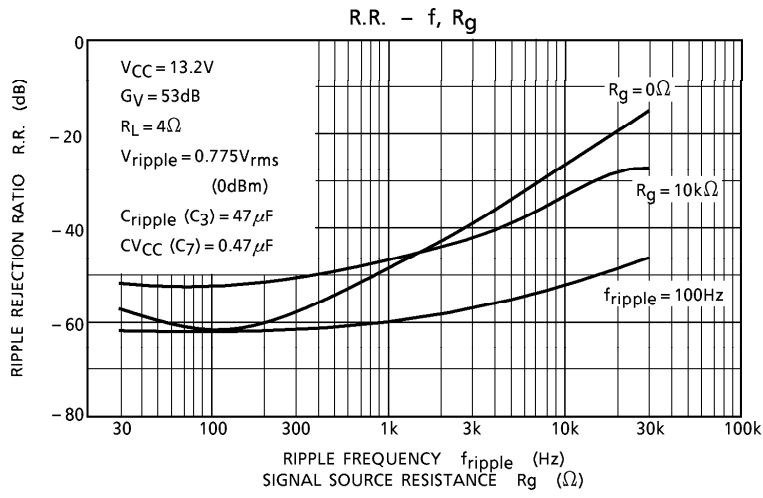
(V_{CC} = 13.2V, Ta = 25°C)

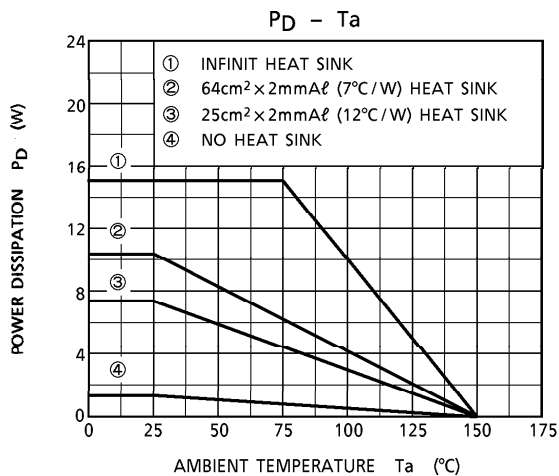
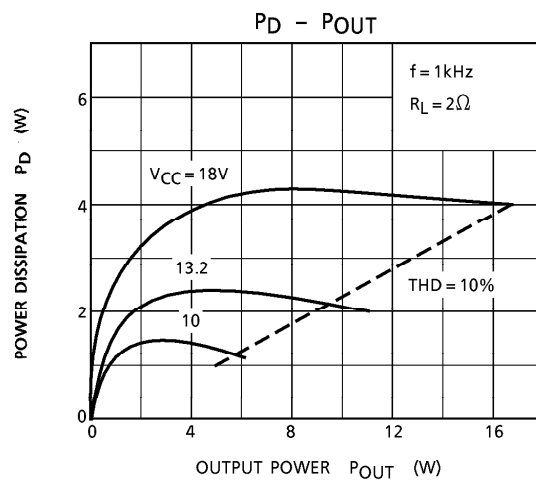
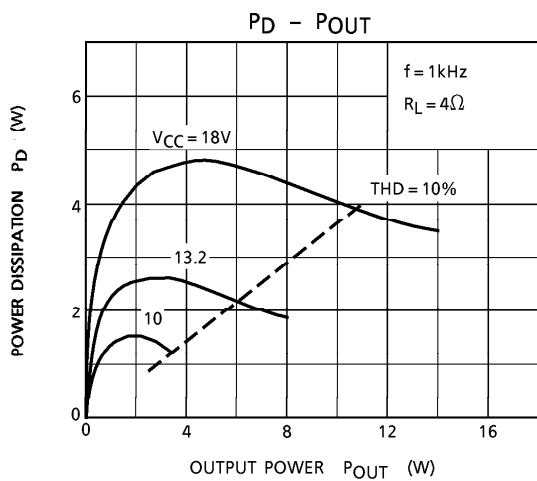
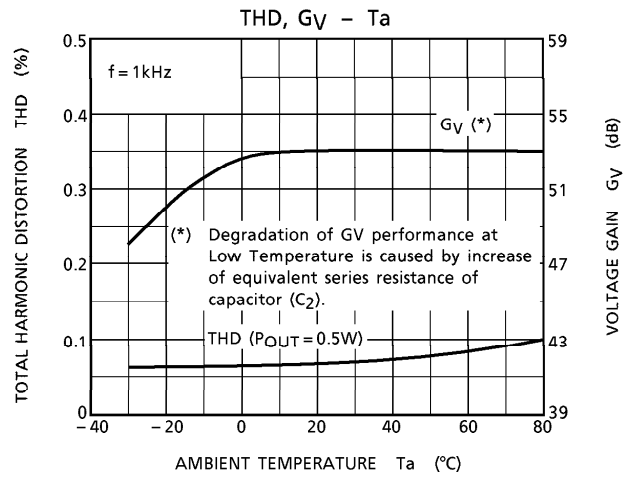
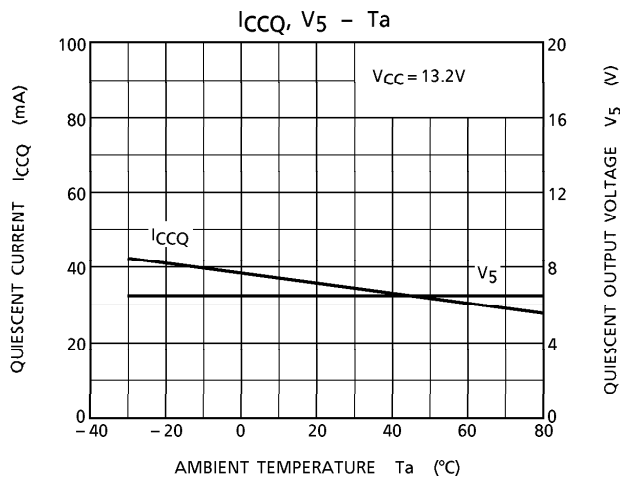
TERMINAL No.	1	2	3	4	5	6	7
DC Voltage (V)	1.5	1.5	6.6	GND	6.6	12.6	V _{CC}

TEST CIRCUIT



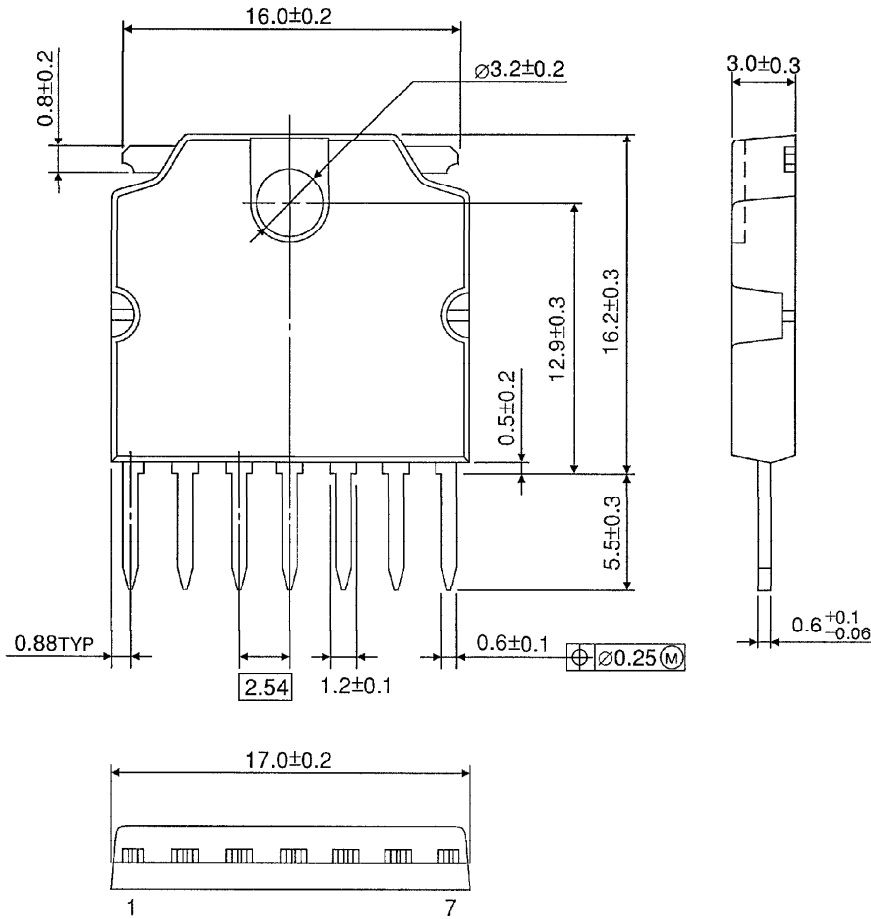






OUTLINE DRAWING
HSIP7-P-2.54A

Unit : mm



Weight : 2.15g (Typ.)